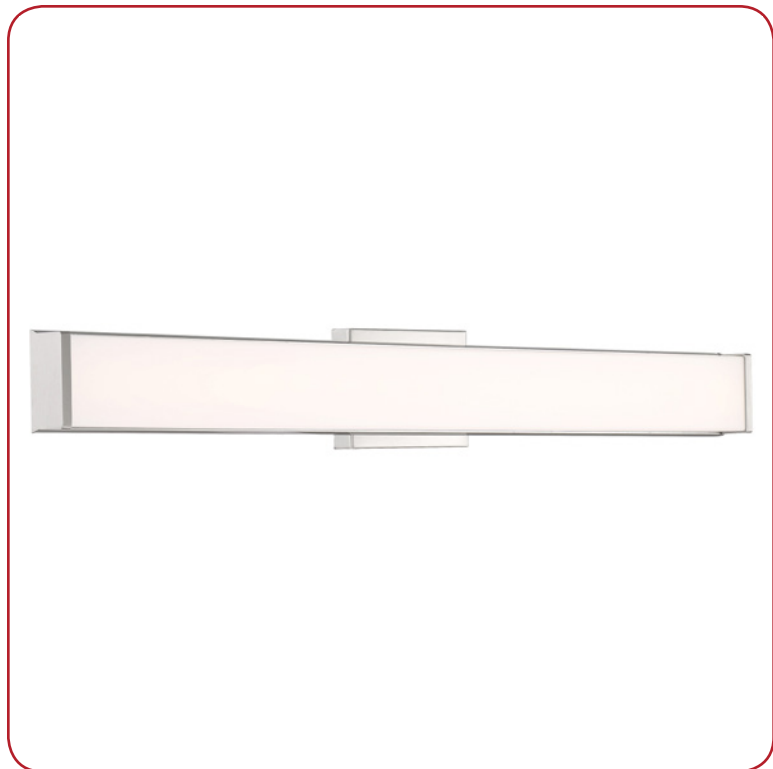


Model No :: **62572LEDD-BS/ACR**  
 Name :: Citi



Project Name :: \_\_\_\_\_  
 Location :: \_\_\_\_\_  
 Type :: \_\_\_\_\_  
 Quantity :: \_\_\_\_\_  
 Notes :: \_\_\_\_\_

**Product Information**

Product ID :: 62572  
 UPC Code :: 641594234589  
 Mounting Type :: Wall  
 Finish :: Brushed Steel (BS)  
 Diffuser :: Acrylic Lens (ACR)  
 Alt. Finishes :: Brushed Steel (BS)  
 Alt. Diffusers :: Acrylic Lens (ACR)

**Product Dimensions**

<b>Fixture</b>		<b>Canopy</b>	
Length ::	N/A	Length ::	N/A
Width ::	36"	Width ::	N/A
Diameter ::	N/A	Diameter ::	N/A
Extension ::	2.5"	Height ::	N/A
Height ::	5.5"		
Overall Height ::	N/A		



**Technical Specifications**

**Qualifications**

Location Rating :: Damp  
 Certification :: ETL Listed (US/Canada)  
 IES File ::  
 JA8 Compliant :: Yes  
 Energy Star :: No  
 ADA Compliant :: Yes  
 Marine Grade :: No  
 Emergency Lighting :: No  
 Warranty :: 5 Year Limited

**Specifications**

Frame Material :: Metal  
 Diffuser Material :: Acrylic  
 Voltage :: 120v  
 Lamping Type :: Dedicated LED  
 Lamping Base :: SSL  
 Lamp Quantity :: 1  
 Lamp Wattage :: 30 W  
 Total Wattage :: 30w  
 Lamps Included :: Yes  
 J-Box Type :: Standard

**Photometrics**

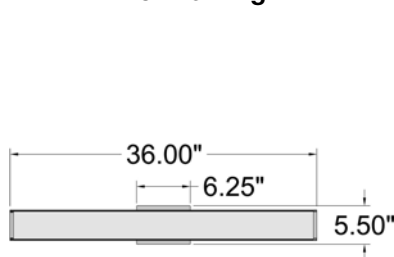
CCT :: 3000  
 CRI :: 90  
 Wattage :: 30w  
 Nominal Lumens :: 2100Lm  
 Delivered Lumens :: 1903Lm

**Recommended Dimmers**

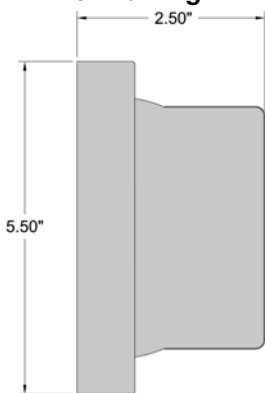
0

Additional Items :: 0

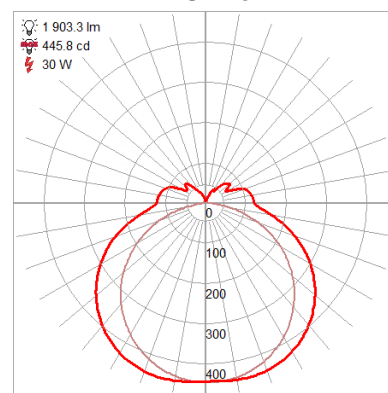
**Line Drawing #1**



**Line Drawing #2**



**IES File**



**Toll Free 800-828-5483 • www.AccessLighting.com**

14410 Myford Road, Irvine, CA 92606

The information provided is subject to change without notice. ©2020 Access Lighting Corporation. All Rights Reserved  
 Rev. 202004 Filename:: 62572LEDD-BS\_ACR.pdf

